

GOLDENWALL BY HANS HOFFMAN

Point Loma Nazarene University exists to provide higher education in a vital Christian community where minds are engaged and challenged, character is modeled and formed, and service is an expression of faith. Being of Wesleyan heritage, we strive to be a learning community where grace is foundational, truth is pursued, and holiness is a way of life.

Course Description: Introduction to the techniques, expressive qualities, and criticism of oil painting media.

Prerequisite(s): ART 103, ART 115 or Consent of Instructor.

PAINTING : Color and Technique

Art 210- Painting :
Color and Technique (3)
T- R 12:00p - 2:20p NTC

This course deals with concepts of painting. Through an exploration of the painting media both its nature and manipulation will be stressed. The organization of the visual experience will incorporate objects, still life and landscape as subjects.

Professor:

Eugene Harris

Office:

Keller Hall 103

Hours:

Posted on door
MTTh 9:00-11:00

Phone:

619.849.2230

Email:

eharris@pointloma.edu

GENERAL AIMS

- To develop in the student a more vital interest in and sensitivity to the visual aspects of his/her environment.
- To afford student opportunity to express his/her ideas and emotions in visual terms.

SPECIFIC AIMS

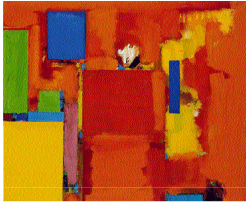
- To acquaint the student with painting media (oil painting will be stressed).
- To acquaint the student with painting manipulation as it reflects principles of design and composition.
- To develop perceptual abilities in the student.
- To develop in the student an understanding of historical methods and techniques as it relates to his/her works.

METHODS

- Practical exercises in translating three-dimensional subjects upon two-dimensional surfaces.
- Individual research on various painters and their paintings.
- Demonstrations by the instructor.
- Class and individual critiques.

COURSE LEARNING OUTCOMES

- Recognize and create effective patterns of dark and light to both accurately describe what they observe in the world.
- Apply different techniques that effectively use brush stroke, oil paint application, color usage, and compositional emphasis in traditional still, landscape, and figurative subjects.
- Organize (compose) the various 2-dimensional elements to create a successful image that suggests 3-dimensional space and 3-dimensional volumes in space.
- Demonstrate how scale can be used to create different effects and evoke different responses from a viewer.
- Translate three-dimensional subjects into two-dimensional images through the manipulation of paint.
- Employ the visual elements and principles of design to make paintings of contemporary and historical styles.
- Demonstrate their knowledge of basic techniques of oil paint mixing and application.



- Demonstrate knowledge of the basic materials and tools commonly used in oil painting.
- Express themselves with originality through the medium of paint.

The student learning outcomes will be achieved through the use of painting assignments, quick oil studies, demonstrations, and gallery reports.

CLASS REQUIREMENTS

- Three major paintings- possibly four (on stretched canvas).
- Five oil painting sketches (composition studies).
- Sketches and preliminary painting studies .
- Two critiques from art periodicals-- one page, double spaced typewritten (taken from painting exhibitions) **due Midterm-- March 1, 2018.**
- Two exhibition critiques-- one page, double spaced typewritten--**due April 26, 2018.**
- Weekly sketchbook.
- Research as needed.

Attendance at all critiques is mandatory, especially the final critique: (Thursday, May 3, 2018 - 1:30- 4:00pm)

CLASS LOGISTICS

- Attendance is required. More than two absences may reflect upon your grade. There are two reasons for this:
 - a. Students should learn from each other’s work in progress
 - b. Assistance from the instructor is essential during the painting procedure rather than after the fact.
- Safety is of primary concern when dealing with paints and chemicals. It is expected that students will follow safety procedures outlined by the professor as well as posted signage and product safety instructions.
- As an act of courtesy, please be on time. Class usually begins with explanations and directions. Excessive tardies may reflect upon your grade.

GRADING POLICY

- Each project will carry two grades, one for content, the other craftsmanship. Longer projects will count for more than one grade.
- Grading will be based upon a 12 point system.

A+	A	A-	B+	B	B-	C+	C	C-	D+	D	D-
12	11	10	9	8	7	6	5	4	3	2	1

- One point may be subtracted for each class period an assignment is turned in late.

ACADEMIC ACCOMMODATIONS:

All students are expected to meet the minimum standards for this course as set by the instructor. Students with learning disabilities who may need accommodations should first discuss options and services available to them in the Academic Support Center (ASC) during the first two weeks of the semester. The ASC, in turn, will contact professors with official notification and suggested classroom accommodations, as required by federal law. Approved documentation must be provided by the student and placed on file in the ASC prior to the beginning of the semester.

Academic Policies

Taken from the undergraduate student catalog

ATTENDANCE AND PARTICIPATION

Regular and punctual attendance at all classes is considered essential to optimum academic achievement. If the student is absent from more than 10 percent of class meetings, the faculty member has the option of filing a written report which may result in de-enrollment. If the absences exceed 20 percent, the student may be de-enrolled without notice. If the date of de-enrollment is past the last date to withdraw from a class, the student will be assigned a grade of W or WF consistent with university policy in the grading section of the catalog. See Academic Policies in the undergrad student catalog.

INCOMPLETES AND LATE ASSIGNMENTS

All assignments are to be submitted/turned in by the beginning of the class session when they are due—including assignments posted in Eclass.

ACADEMIC HONESTY

Students should demonstrate academic honesty by doing original work and by giving appropriate credit to the ideas of others. As stated in the university catalog, “Academic dishonesty is the act of presenting information, ideas, and/or concepts as one’s own when in reality they are the results of another person’s creativity and effort. Such acts include plagiarism, copying of class assignments, and copying or other fraudulent behavior on examinations. A faculty member who believes a situation involving academic dishonesty has been detected may assign a failing grade for a) that particular assignment or examination, and/or b) the course.” See Academic Policies in the undergrad student catalog.

ACADEMIC ACCOMMODATIONS

While all students are expected to meet the minimum academic standards for completion of this course as established by the instructor, students with disabilities may require academic accommodations. At Point Loma Nazarene University, students requesting academic accommodations must file documentation with the Disability Resource Center (DRC), located in the Bond Academic Center. Once the student files documentation, the Disability Resource Center will contact the student’s instructors and provide written recommendations for reasonable and appropriate accommodations to meet the individual needs of the student. See Academic Policies in the undergrad student catalog.

FERPA POLICY

In compliance with federal law, neither PLNU student ID nor social security number should be used in publically posted grades or returned sets of assignments without student written permission. This class will meet the federal requirements by (each faculty member choose one strategy to use: distributing all grades and papers individually; requesting and filing written student permission; or assigning each student a unique class ID number not identifiable on the alphabetic roster.). Also in compliance with FERPA, you will be the only person given information about your progress in this class unless you have designated others to receive it in the “Information Release” section of the student portal. See Policy Statements in the undergrad student catalog.

FINAL EXAMINATION POLICY

Successful completion of this class requires taking the final examination on its scheduled day. The final examination schedule is posted on the Class Schedules site. No requests for early examinations or alternative days will be approved.

PLNU COPYRIGHT POLICY

Point Loma Nazarene University, as a non-profit educational institution, is entitled by law to use materials protected by the US Copyright Act for classroom education. Any use of those materials outside the class may violate the law.

USE OF TECHNOLOGY

Point Loma Nazarene University encourages the use of technology for learning, communication, and collaboration. It is the responsibility of the student to use computers and other technological equipment in accordance with class content. The use of social media during class time is forbidden.